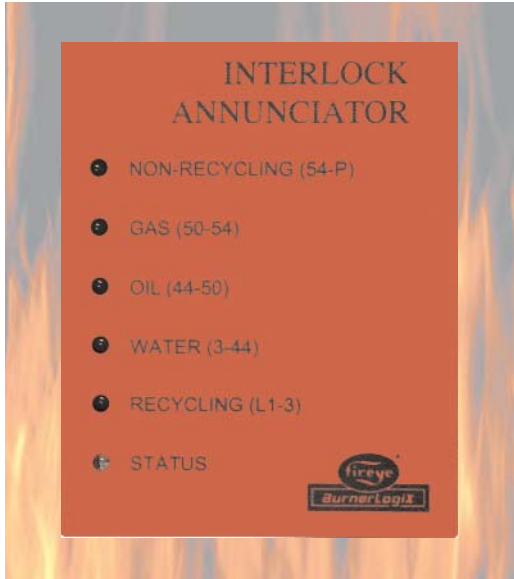


INTRODUCING



YZ300 INTERLOCK ANNUNCIATOR for all BurnerLogix Systems



The FIREYE YZ300 Interlock Annunciator Module provides increased interlock supervision capability of the BurnerLogix System. The Interlock Annunciator Module *simply* connects to any YB110 or ZB110 BurnerLogix chassis/amplifier by means of a low cost cable.

By wiring any of **twenty** interlock switches into the Interlock Annunciator Module, the BurnerLogix display automatically acts as a **“first-out”** annunciator. In addition, a fuel selection circuit provides full annunciation even if two fuels are fired simultaneously!

The YZ300 is shipped with default messages associated with each set of terminals. LED's are provided that will blink to indicate what section of the L1-3 and 3-P circuit is open.

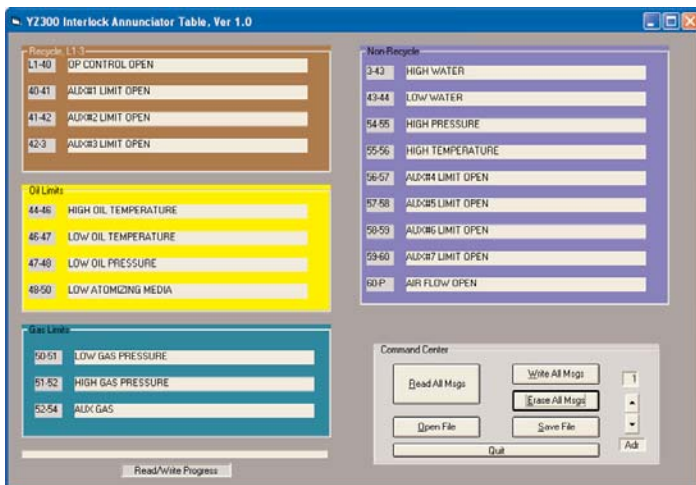
Since any interlock message can be modified, the arrangement of interlocks is your choice, making retro-fits easy!

Messages are modified in one of two ways: select from a **built-in library** of messages through the display or **program** a customized message using Fireye's easy to use Windows based YZ300P program. Each custom message can be up to 40 characters in length. Program messages can be saved to the user's PC and recalled later if necessary.

All customized messages are stored in the YZ300. The YZ300 does not require connection to a BurnerLogix system to be custom programmed.

The wiring bases for the YZ300 (60-2872-1 and 60-2874-1) measure 4 in. wide by 7 in. tall, consuming a minimum amount of cabinet space. The wiring bases contain a 24 position terminal block, each position clearly numbered for easy identification.

Each terminal can accept up to 2 type 14 AWG wires and each terminal is a clamp type terminal to assure a good mechanical connection that provides sufficient pressure against the wire.



All BurnerLogix products utilize industry standard Modbus-RTU as the communications protocol. Fireeye offers at **no charge** the YZ300P to be used for programming custom messages with any Windows based PC. (Consult Fireeye on how to get it!) Simply click on any interlock position to get a pop-up dialog box, enter your custom message, click on the WRITE command and you're done!

The YZ300P is also used to upload and download messages to and from the YZ300P. Custom files can be saved and later retrieved for quick and easy programming.

The YZ300 does not require connection to a BurnerLogix system for programming.

With Modbus-RTU, each interlock position can be monitored during burner operation, giving you total control over system operation.



A UTC Fire & Security Company

A Burner's Favorite Control

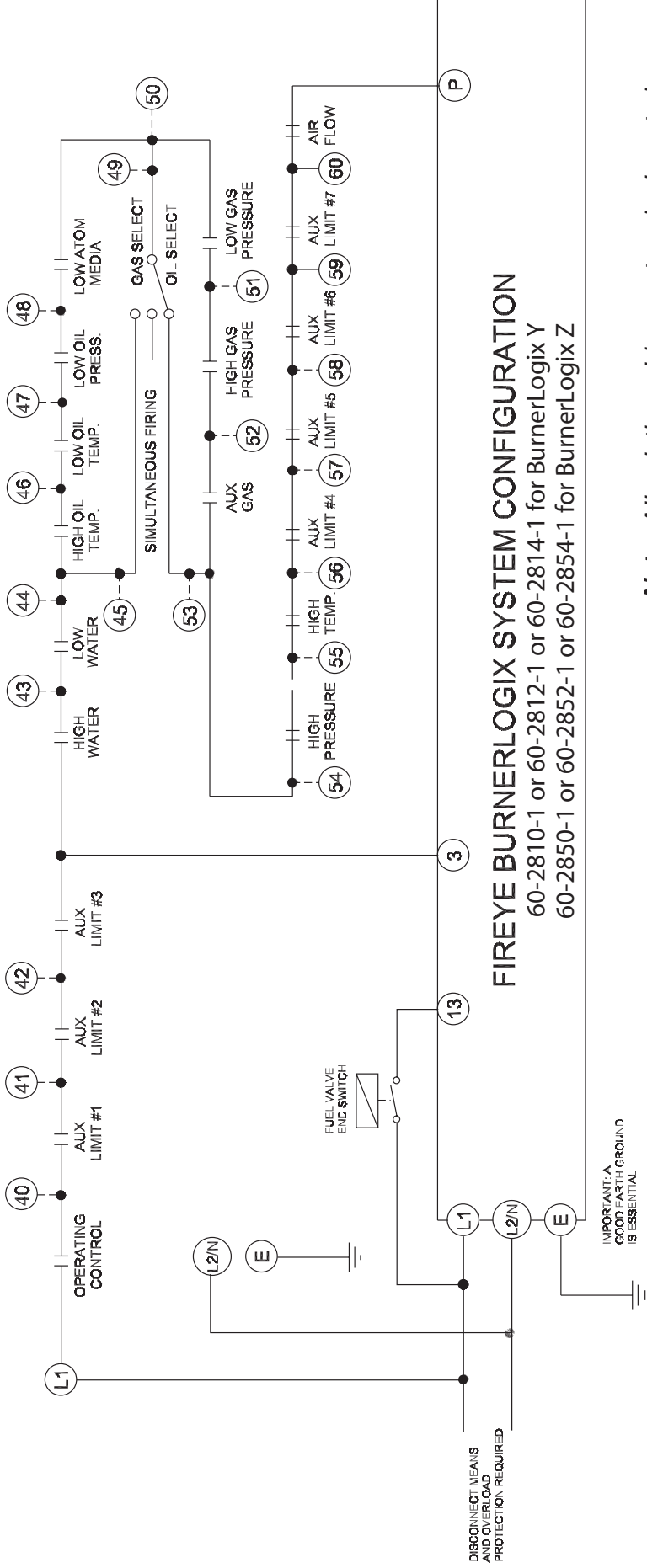
3 Manchester Road • Derry, NH 03038 • USA
www.fireeye.com

BL-CS7
Jan. 2007

ORDERING INFORMATION

PART NUMBER	DESCRIPTION
YZ300	Interlock Annunciator Module used with the YB110 or ZB110 BurnerLogix chassis/amplifier
60-2872-1	Wiring base, terminal blocks, closed with knockouts
60-2874-1	Wiring base, terminal blocks, open end
ED580-4, -8	YB110 or ZB110 to YZ300 interconnection cable in 4' and 8' lengths
YZ300P	Windows based software for programming custom messages

WIRING DIAGRAM FOR DEFAULT MESSAGES



Remove all power from the BurnerLogix control and the YZ300 before wiring.



Note: All existing wiring on terminals not shown will be undisturbed when the YZ300 is installed.